

MAPS TODAY

Monthly Publication

Title-Code:-TELENG00772

This title has been verified by Registrar of Newspapers India, in terms of the provision to Section 6 of the PRB ACT 1867

Volume 1 Issue 6

April 2019

Price Rs150



Mohan's Musings Controls & Checks

Murali Mohan, ex-scientist,
ISRO and Photogrammetry expert

Group photo on 10 April 2019
at National Survey Day
at Instn. of Engrs., Hyderabad

(Details on page ... 5)

National Survey day-
L-R : Dr Dr.V.Raghava swamy;
Maj Gen Dr.R. Siva Kumar;
Mr. Murali Mohan;
Mr. KK Pappan;

(Details on page ...5)

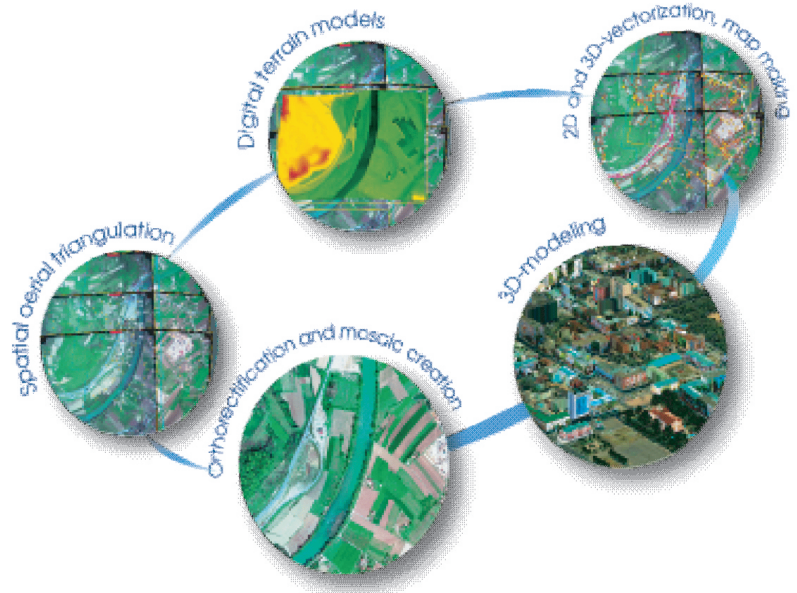


Overview



RACURS, Russia

PHOTOMOD®



The PHOTOMOD software family comprises a wide range of products for the remote sensing data

photogrammetric processing. This state-of-the-art software allows the extraction of geometrically accurate spatial information from almost all commercially available types of imagery, whether obtained by film or digital cameras, UAS, high resolution satellite scanners.

PHOTOMOD's flexible modular architecture and powerful import/export tools permit a variety of configurations: **Complete Digital Photogrammetric Workstation** (standalone configuration), high productivity distributed network environment for accomplishing large projects, complementary workplaces that can be used along with third-party systems to increase the overall productivity during the most time-consuming and labor-intensive operations like feature extraction and DTM creation.

Today PHOTOMOD is the most popular digital photogrammetric software in Russia and is also used in 70 countries all over the world. PHOTOMOD is the only digital photogrammetric system with the Russian Federation Ministry of Defense certificate and also the main digital photogrammetric software for the Federal Space agency of the Russian Federation (ROSCOSMOS) and Russian Federal Service for State Registration, Cadastre and Cartography (ROSREESTR)

General questions: info@racurs.ru

Mohan's Musings *Controls & Checks*

Murali Mohan, ex-scientist,
ISRO and Photogrammetry expert

(Details on page ...5)



(Details on page ...5)

SECON

ISO 9001:2015, CMMI Level 3 Certified, NABL Accredited



GIS Driven Multidiscipline Engineering Consultancy

SECON SERVICE OFFERINGS

Design Consultancy and Engineering Services

- Highway Engineering & Construction Supervision
- Public Health Engineering
- Irrigation, Flood Control & Water Management
- Cross Country Pipeline Transportation, City Gas Network
- Environment Impact & Management Plan
- Town Planning, Electrical, Telecom & Utilities
- Right of Way Acquisition & Permitting and Clearance
- Software & Web Enabled Geoportal Development Services

Investigation and Services

- Photogrammetry, LiDAR & Remote Sensing
- Aerial LiDAR & Imagery, Mobile LiDAR data Acquisition and Processing
- Geotech Engineering and Geophysical Surveys
- Underground Utility Detection (GPR)
- Underwater Leak Detection and Turnkey Solution
- Airborne and Ground Geophysical Surveys
- Route Planning & 3D Corridor Mapping
- GIS/CADD Data Processing
- Geodetic, Topographic, Cadastral, Hydrological Surveys

HONOURS & AWARDS

Geospatial World Excellence Award 2018

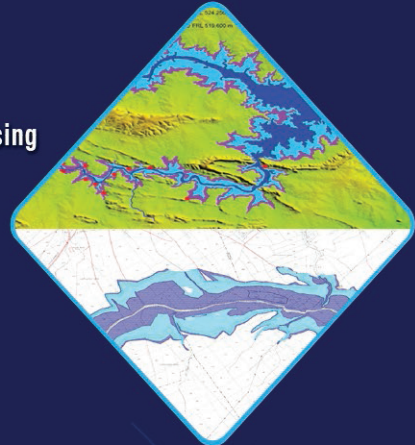
Best Professionally Managed Company 2014

Geospatial Company of the year 2013

National award for Excellence in Engineering Consultancy 2012

Project of National Excellence - Urban Infrastructure 2011

Export Excellence Award 2008 & 2010



SECON PRIVATE LIMITED

147, 7B Road, EPIP, Whitefield, Bangalore - 560 066, INDIA

Tel: +91-80-41197778, Fax: +91-80-41194277, E-mail: feedback@secon.in, www.secon.in

Offices: New Delhi, Mumbai, Vadodara, Lucknow, Bhopal, Patna, Jaipur and Chennai